

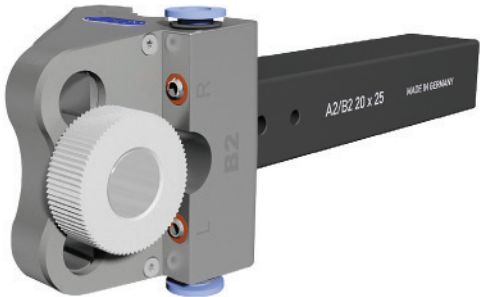
B2 / FL

QUICK FORM KNURLING TOOLS

The B2 offers versatile application possibilities: it is applicable as right- and left-hand version and can be used with one or two knurling wheels. Not only the versatility is convincing but above all the excellent stability. The special design with a dovetail guide between shank and tool body minimises vibrations and maximises the service life of the knurling wheels.

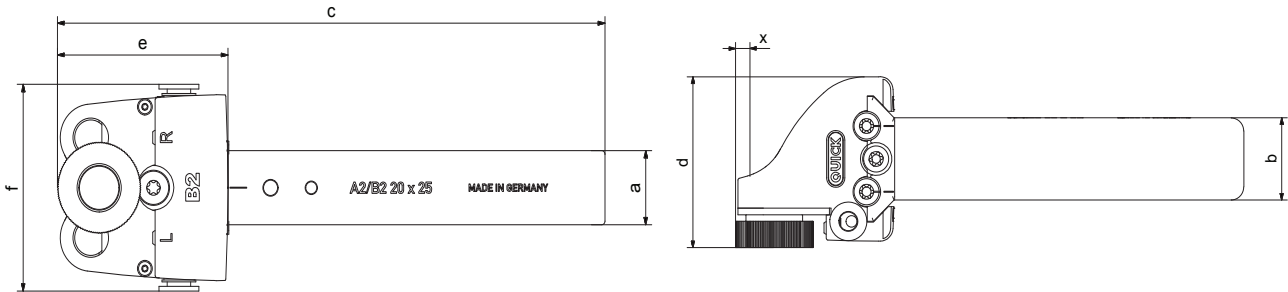
THE B2 SETS A NEW BENCHMARK FOR FLEXIBILITY:

- The B2 form knurling tool can be used in a variety of different ways.
- Suitable as left and right-hand version on main and sub spindle of CNC controlled and conventional lathes
- The B2 can be used with one knurling wheel or with two knurling wheels depending on the required knurling pattern.



MODEL	PROD.-NO.	WORKPIECE Ø	KNURLING WHEEL mm (Ø x width x bore)	a	b	c	d	e	f	x
B2 20x25 (one wheel)	P712-0265	15 - 250 mm	25 x 8 x 10/12* (283)	20	25	161,3	52	50,3	55,5	4,7
B2 25x25 (one wheel)	P712-0266	15 - 250 mm	25 x 8 x 10/12* (283)	25	25	161,3	52	50,3	55,5	4,7

*DETAILS ABOUT KNURLING WHEELS (WHEEL PITCHES, TOOTH ANGLE ETC.) ARE LISTED ON PAGE 40/41.



RIGHT-HAND TOOL SHOWN
CUTTING SPEED AND FEED RATE INFORMATION, PAGE 43:

RAA (Straight):



1 x 90° knurling wheel (forming) (AA)

RBR30° (Spiral):

RBR45° (Spiral):



1 x 30°L knurling wheel (forming)
1 x 45°L knurling wheel (forming)

RBL30° (Spiral):

RBL45° (Spiral):



1 x 30°R knurling wheel (forming)
1 x 45°R knurling wheel (forming)

